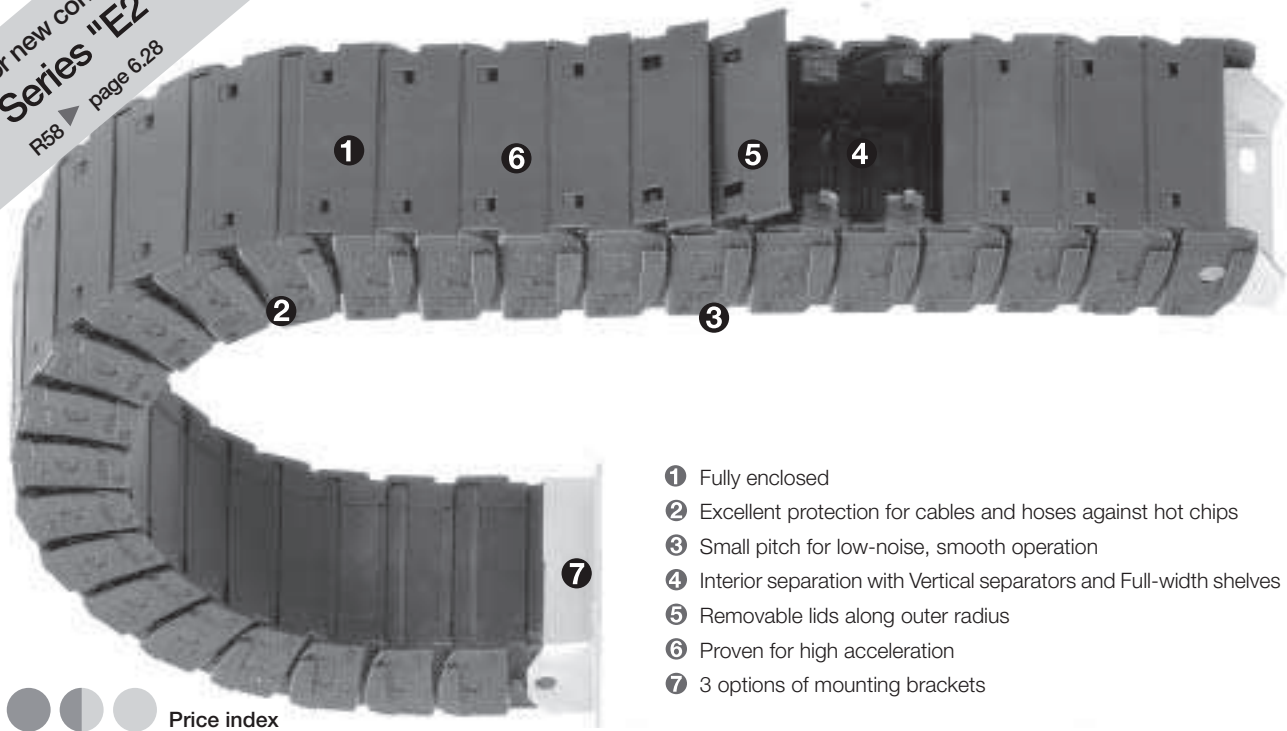


For new constructions:  
**Series "E2 Tubes"**  
R58 ▶ page 6.28

# Series R58 classic E2 Tubes

igus® E-ChainSystems®

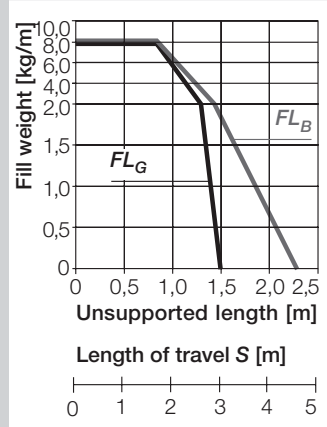


- 1 Fully enclosed
- 2 Excellent protection for cables and hoses against hot chips
- 3 Small pitch for low-noise, smooth operation
- 4 Interior separation with Vertical separators and Full-width shelves
- 5 Removable lids along outer radius
- 6 Proven for high acceleration
- 7 3 options of mounting brackets

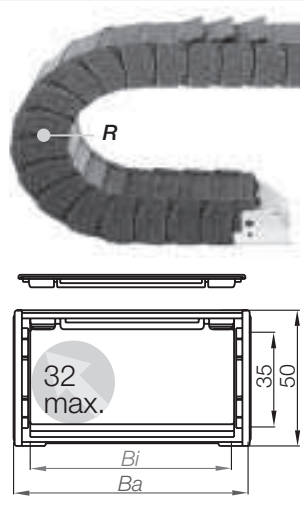
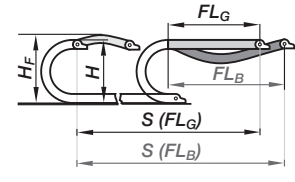
● ● ● Price index

Phone +49- (0) 22 03-96 49-800  
Fax +49- (0) 22 03-96 49-222

igus® GmbH  
51147 Cologne



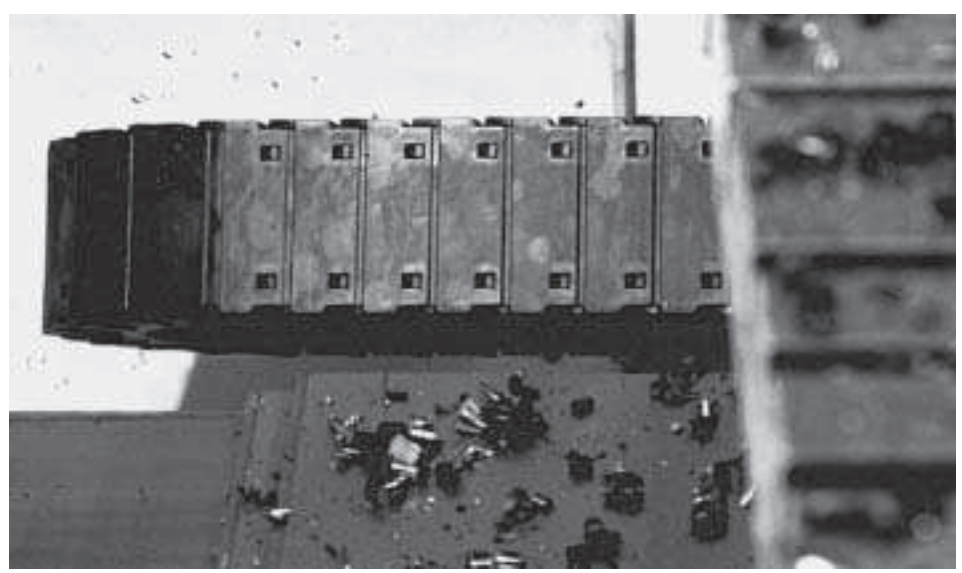
**Unsupported length**  
 $FL_G$  = with straight upper run  
 $FL_B$  = with permitted sag



## R58 classic - snap-open along outer radius

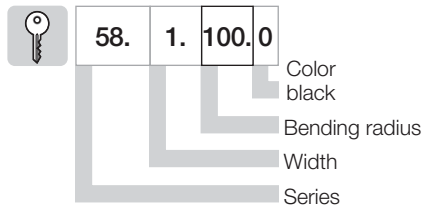
Part No.	$B_i$ [mm]	$B_a$ [mm]	$R$ [mm]	Bending Radii
58.05. <input type="text"/> .0	50	66		075 100 125
58.1. <input type="text"/> .0	75	92		150 200 250
Radii for all widths!				

Supplement Part No. with required radius. Example: 58.1.  .0  
 Bending radii listed above can be combined with every tube width!



Series R58 classic in the chipping area of machine tools

### Part No. structure



**Order example 3,0 m complete E-Tube**  
 (indicate tube-lengths or number of links)  
 3,0 m (90 links) **Series 58.1.100.0**  
 + 2 separators **581** assembled each 2<sup>nd</sup> link  
 + 1 set mounting brackets **581.12**