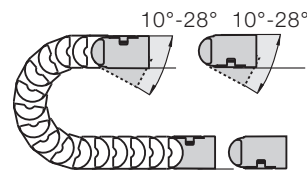


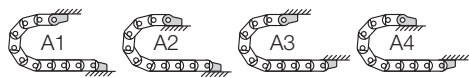
Angled polymer bracket

- Locked connection to E-Tube
- Minimized external width
- For long travels
- Attachment option for strain relief tiewrap plate

Moving end (outer link)
1180...1PZ(B)



1180...4PZ(B) Fixed end
(inner link)



Possible installation conditions for assembled mounting brackets ► Order example "preassembled" below

Dimensions and order configurations

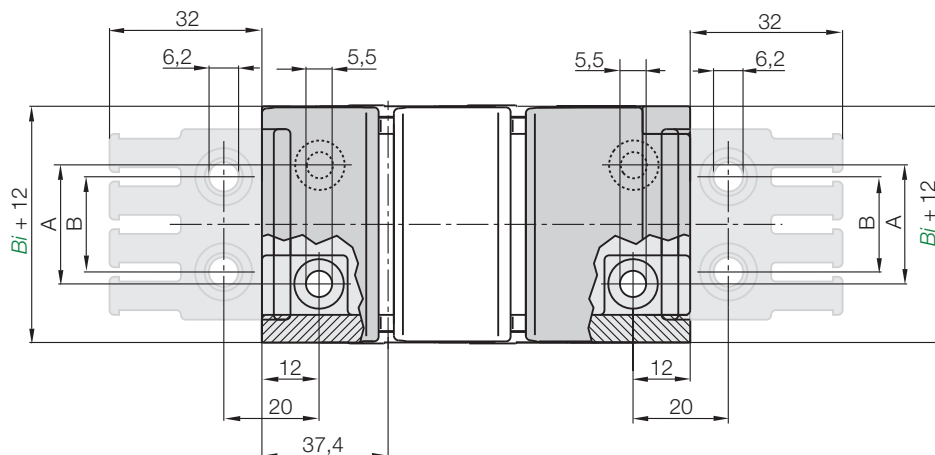
Strain relief is possible on the moving end and/or the fixed end.

1180...1PZ(B)

Moving end

1180 ...4PZ(B)

Fixed end



Phone +49- (0) 22 03-96 49-800
Fax +49- (0) 22 03-96 49-222

igus GmbH
51147 Cologne

Part No. structure

1180.048.14.PZB.A1

A... must be indicated on preassembled configurations with assembled tiewrap plates

Full set = 14

Width

Mounting brackets for selected chain type

Full set, for both ends:

1180.048.14.PZB+tiewrap plate

Single-part order:

1180.048.1.PZB+tiewrap plate

Mounting bracket with bore

1180.048.4.PZB+tiewrap plate

Mounting bracket with pin

For Series	Part No. full set with tiewrap plate	Part No. full set without tiewrap plate	Dim. A [mm]	Dim. B [mm]
117-118.025. ►	1180.025.14PZB	1180.025.14PZ	12	15
117-118.038. ►	1180.038.14PZB	1180.038.14PZ	25	20
117-118.048. ►	1180.048.14PZB	1180.048.14PZ	35	30
117-118.063. ►	1180.063.14PZB	1180.063.14PZ	50	40
117-118.080. ►	1180.080.14PZB	1180.080.14PZ	67	60
117-118.100. ►	1180.100.14PZB	1180.100.14PZ	87	80

Please add the Part No. with the requested index - e.g. 1180.048.12.PZB

For the preassembled mode please add the index A1...A4 e.g. 1180.048.12PZB.A1

The following parts are required for attachment of the mounting brackets:

- Countersunk bolt M5 DIN 912-8.8 Length depends on the thickness of the attachment base
- Hexagon nut M5 DIN 934-8

Internet: www.igus.eu
E-mail: info@igus.de