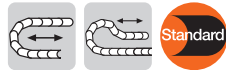


The attachment variants arising automatically by the choice of the KMA mounting bracket

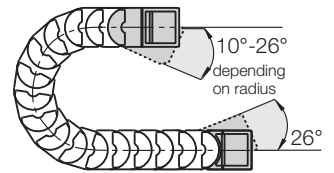


**Option KMA\* - pivoting, extended**

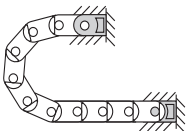
- Recommended for unsupported and gliding applications
- Extended, pivoting
- Easy to install
- Universal mountable with attachment capability on all sides
- Locked connection to E-Tube
- Long travels with lowered mounting height possible

\*KMA = Polymer Metal Mounting Bracket

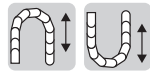
Moving end (outer link)  
15800/15801 ...1



15800/15801...2  
Fixed end (inner link)



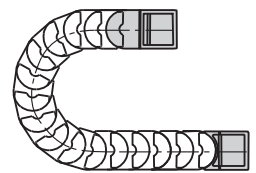
The attachment variants arising automatically by the choice of the KMA mounting bracket



**Option KMA - locking, extended**

- Recommended for vertical hanging / standing applications
- Extended, locking
- Easy to install
- Flush mounting at both ends of the E-Tube
- Universal mountable with attachment capability on all sides
- Corrosion-resistant

Moving end (outer link)  
15800/15801 ...3

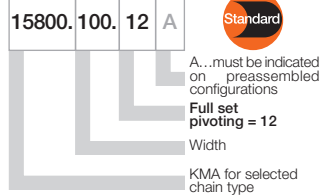


15800/15801...4  
Fixed end (inner link)

**Dimensions and order configurations**



**Part No. structure (pivoting)**



Full set, for both ends:

15800.100.12

Single-part order:

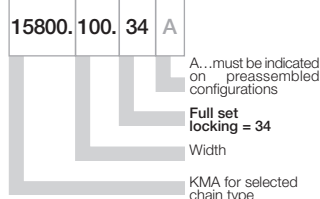
15800.100.1

Mounting bracket with bore

15800.100.2

Mounting bracket with pin

**Part No. structure (locking)**



Full set, for both ends:

15800.100.34

Single-part order:

15800.100.3

Mounting bracket with bore

15800.100.4

Mounting bracket with pin

15800/15801...1 Standard! (pivoting)

15800/15801...3 (locking)

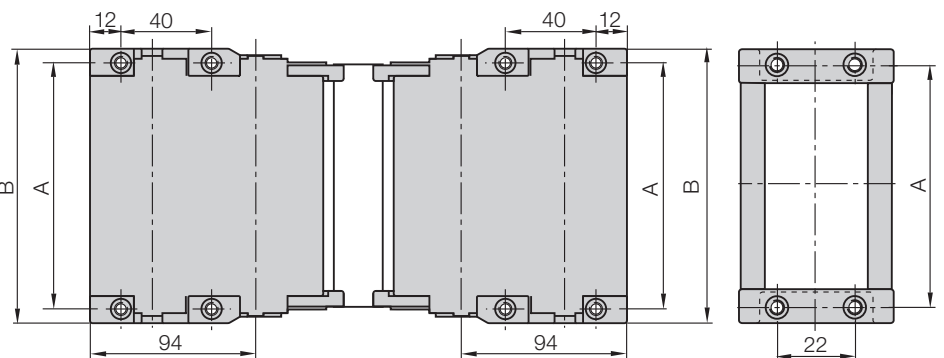
Moving end

Standard! (pivoting) 15800/15801...2

(locking) 15800/15801...4

Fixed end

Quickflange available upon request



For Series	Part No. full set	Dim. A [mm]	Dim. B [mm]
157-158.040 ▶	15801.040. <input type="checkbox"/>	50	61
157-158.050 ▶	15800.050. <input type="checkbox"/>	60	71
157-158.075 ▶	15800.075. <input type="checkbox"/>	85	96
157-158.088 ▶	15800.088. <input type="checkbox"/>	98	109
157-158.090 ▶	15801.090. <input type="checkbox"/>	98	109
157-158.100 ▶	15800.100. <input type="checkbox"/>	110	121
157-158.125 ▶	15800.125. <input type="checkbox"/>	135	146
157-158.135 ▶	15800.135. <input type="checkbox"/>	145	156
157-158.150 ▶	15800.150. <input type="checkbox"/>	160	171
157-158.175 ▶	15800.175. <input type="checkbox"/>	185	196
157-158.200 ▶	15800.200. <input type="checkbox"/>	210	221

Please add the Part No. with the requested index - 12 for the pivoting configuration

e.g. 15800.100.12 or 34 for the locking configuration e.g. 15800.100.34

For the preassembled mode please add the index A e.g. 15800.100.12 A

The following parts are required for attachment of the mounting brackets:

- Socket head cap bolt M5 DIN 912-8.8 Length depends on the thickness of the attachment base
- Washer 5,3 DIN 125-ST ● Hexagon nut M5 DIN 934-8

