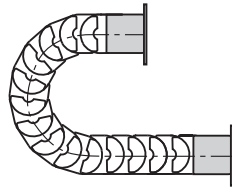


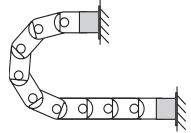
### Flange mounting brackets made of steel

- Metallic flange brackets with popular hole patterns, easily be replaced by their modern successors, without having to alter the hole pattern
- Bolted connection outside of chain cross-section possible
- Universal mountable with attachment capability on all sides
- Steel, galvanized
- One-piece mounting bracket
- High stability

Moving end (outer link)  
905.050.X



905.050.X  
Fixed end (inner link)

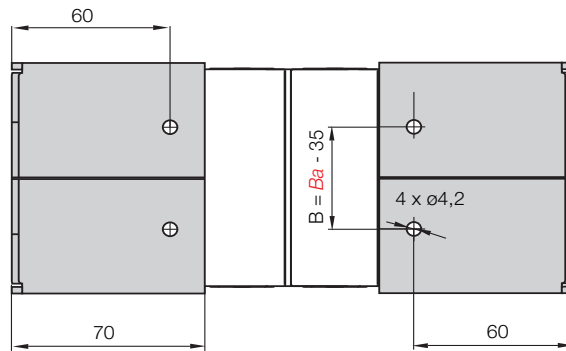
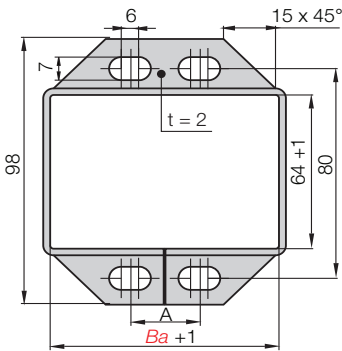


Flush mounting possibilities at both ends of the E-Tube

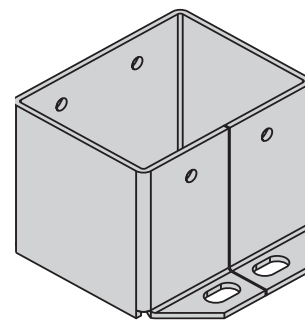
Hole patterns flange steel mounting brackets 905.050.X

905.050.X  
Moving end

905.050.X  
Fixed end



### Dimensions and order configurations



Principle sketch flange steel mounting brackets



Mounting only with hexagon socket DIN 912 M6 and washer DIN 125, 6,3 mm

For Series	Hole pattern	Part No. full set	Bi [mm]	Ba [mm]	Dim. A [mm]	Dim. B [mm]
R168.075	68.01	905.050.1	75	93	30	58
R168.115	68.02	905.050.2	115	133	50	98
R168.175	68.03	905.050.3	175	193	100	158

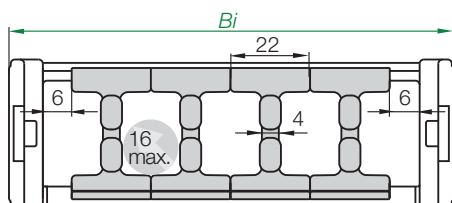
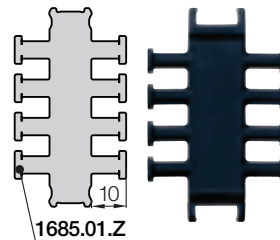
Phone +49- (0) 22 03-96 49-800  
Fax +49- (0) 22 03-96 49-222

## R100 | Serie R167·R168 | Accessories | Strain Relief

### Strain relief separator

Separator with integrated strain relief, for use in the first or last chain link. For manufacturing of switchgear cabinets or for the assembly of machines. Easy to assemble without any fastening device. Separator base 1658.01.Z is 22 mm wide. The possible number of separators per E-Chain® is defined by its inner width Bi and by the cable-diameter. **Details ▶ chapter 10**

Part No.	Number of teeth	For Series
1658.01.Z	4 both sides	R167/168 E-Tube



**Strain Relief Separator** - The number of separators is depending on the cables and the available inner space. Example: E-Chain® inner width Bi 100 mm: 4 Strain Relief Separator, max. cable diameter 16 mm.

**Details ▶ chapter 10**



Other strain relief elements  
▶ chapter 10



▶ chapter 10



▶ page 6.5