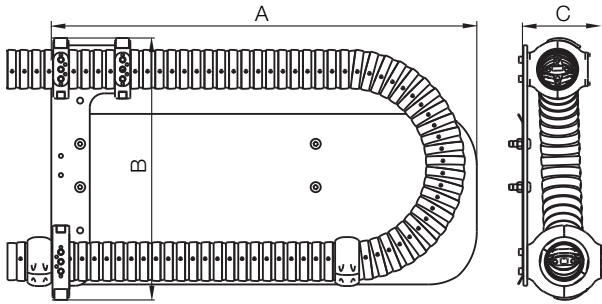


Triflex® RS - Installation Dimensions



Triflex® RS - Fastening point, right

Universal module	Part No.	A	B	C
TRS for Series		[mm]	[mm]	[mm]
TRC.40/TRE.40	▶ TRC/TRE.RS.40.R	620	301	95
TRC.60/TRE.60	▶ TRC/TRE.RS.60.R	885	528	150
TRC.70/TRE.70	▶ TRC/TRE.RS.70.R	885	545	167
TRC.85/TRE.85	▶ TRC/TRE.RS.85.R	885	565	167
TRC.100/TRE.100	▶ TRC/TRE.RS.100.R	912,5	614	167

Triflex® RS - Fastening point, right, with cover

Universal module	Part No.	A	B	C
TRS for Series		[mm]	[mm]	[mm]
TRC.40/TRE.40	▶ TRC/TRE.RS.40.RC	620	301	95
TRC.60/TRE.60	▶ TRC/TRE.RS.60.RC	885	528	150
TRC.70/TRE.70	▶ TRC/TRE.RS.70.RC	885	545	167
TRC.85/TRE.85	▶ TRC/TRE.RS.85.RC	885	565	167
TRC.100/TRE.100	▶ TRC/TRE.RS.100.RC	912,5	614	167

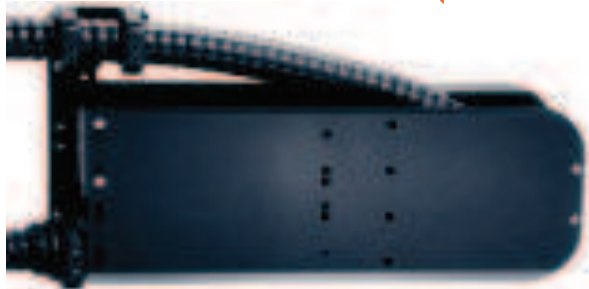
Triflex® RS - Fastening point, left

Universal module	Part No.	A	B	C
TRS for Series		[mm]	[mm]	[mm]
TRC.40/TRE.40	▶ TRC/TRE.RS.40.L	620	301	95
TRC.60/TRE.60	▶ TRC/TRE.RS.60.L	885	528	150
TRC.70/TRE.70	▶ TRC/TRE.RS.70.L	885	545	167
TRC.85/TRE.85	▶ TRC/TRE.RS.85.L	885	565	167
TRC.100/TRE.100	▶ TRC/TRE.RS.100.L	912,5	614	167

Triflex® RS - Fastening point, left, with cover

Universal module	Part No.	A	B	C
TRS for Series		[mm]	[mm]	[mm]
TRC.40/TRE.40	▶ TRC/TRE.RS.40.LC	620	301	95
TRC.60/TRE.60	▶ TRC/TRE.RS.60.LC	885	528	150
TRC.70/TRE.70	▶ TRC/TRE.RS.70.LC	885	545	167
TRC.85/TRE.85	▶ TRC/TRE.RS.85.LC	885	565	167
TRC.100/TRE.100	▶ TRC/TRE.RS.100.LC	912,5	614	167

Fastening point, right



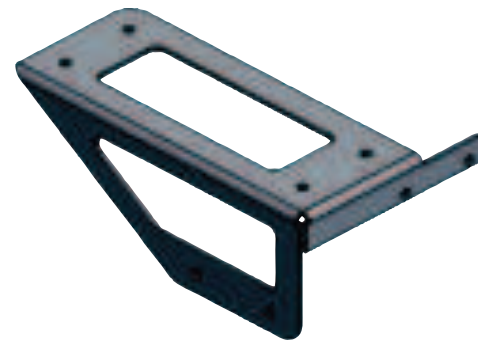
Triflex® R-Set with cover for the additional support of switch cabinets or valve terminals

Triflex® R - More accessories available now ...



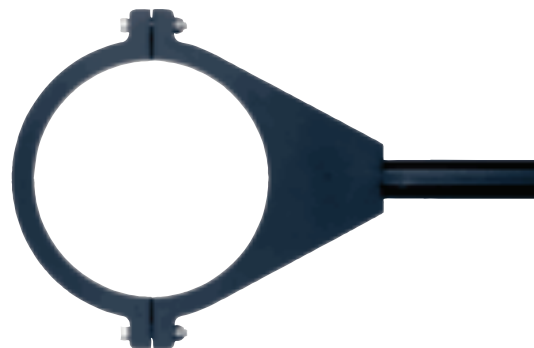
Triflex® R-Set with cover (barrier)

- Creates more mounting space on robots - e.g. for switch cabinets or valve terminals
- For upside down applications
- Enables the use of Triflex® RS in applications with extreme movements



43 Adapter brackets for robots from stock

- 43 adapter bracket types from stock for many different robots
- For all Triflex® RS modules
- For assembly to the side or on top
- Free download of 3D CAD files for many brackets ▶ www.igus.eu/triflexbrackets



Triflex® R fixation to axis 6
Part No. TR.907.667.Inner Ø

- One axis diameter (Ø30 mm) for all robots
- Easy and fast assembly
- For Triflex® R mounting bracket with CFX clamps (TR.XX.20.30)
- Für Triflex® R mounting bracket with tiwrap plates (TR.XX21.30)
- For TR.XX.22.30 Quick exchange kit

Triflex® R

Phone +49- (0) 22 03-96 49-800
Fax +49- (0) 22 03-96 49-222

