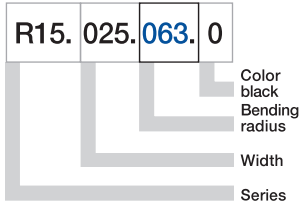


Part No. structure



Series R15 E-Tube - zip-open along the outer radius

Part No.	<i>Bi</i> [mm]	<i>Ba</i> [mm]	<i>R</i> [mm]	Bending Radii	Weight [kg/m]
R15.025. <input type="text"/> .0	25	36	<input type="text"/>	<input type="text"/> <input type="text"/> <input type="text"/> <input type="text"/> <input type="text"/> <input type="text"/> <input type="text"/> <input type="text"/> <input type="text"/> <input type="text"/> <input type="text"/>	≈ 0,40
R15.038. <input type="text"/> .0	38	49	<input type="text"/>	<input type="text"/> <input type="text"/> <input type="text"/> <input type="text"/> <input type="text"/> <input type="text"/> <input type="text"/> <input type="text"/> <input type="text"/> <input type="text"/> <input type="text"/>	≈ 0,46
R15.063. <input type="text"/> .0	63	76	<input type="text"/>	<input type="text"/> <input type="text"/> <input type="text"/> <input type="text"/> <input type="text"/> <input type="text"/> <input type="text"/> <input type="text"/> <input type="text"/> <input type="text"/> <input type="text"/>	≈ 0,63
R15.080. <input type="text"/> .0	80	94	<input type="text"/>	<input type="text"/> <input type="text"/> <input type="text"/> <input type="text"/> <input type="text"/> <input type="text"/> <input type="text"/> <input type="text"/> <input type="text"/> <input type="text"/> <input type="text"/>	≈ 0,70

More E-Tube widths are available upon request.

Supplement part no. with required radius (*R*) Example: R15.025. .0

0 = standard color, other colors ▶ page 1.39 · Pitch = 30,5 mm/link - Links/m = 33

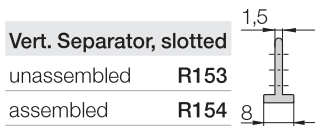


Phone +49- (0) 22 03-96 49-800
Fax +49- (0) 22 03-96 49-222

igus® GmbH
51147 Cologne

Internet: www.igus.eu
E-mail: info@igus.de

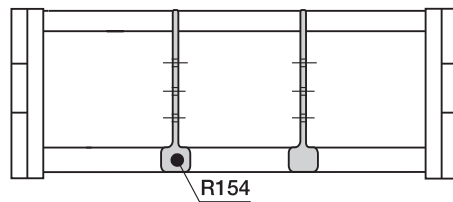
Zipper | **Series R15** | Accessories | Interior Separation



Vert. Separator, slotted
unassembled R153
assembled R154

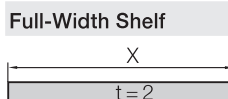
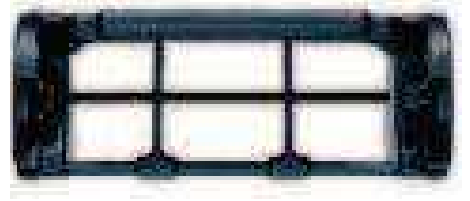
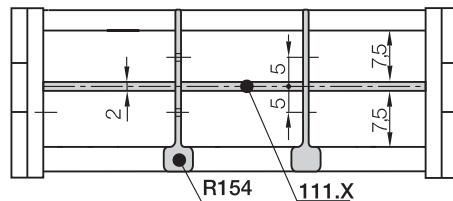
Option 1: Vertical Separators

- Vertical Separators are used if a vertical subdivision of the E-Chain® interior is required
- Standard subdivision with Vertical Separator, slotted 154, for combinations with Full-Width Shelf 111.X
- By standard Vertical Separators are assembled every other chain link



Option 2: Full-Width Shelves

- For applications involving many thin cables with similar or identical diameters



Full-Width Shelf

Width X [mm]	Part No. unassembled	Part No. assembled
025	110.25	111.25
038	110.38	111.38

Width X [mm]	Part No. unassembled	Part No. assembled
063	110.63	111.63
080	110.80	111.80