

Dimensions [mm]

igubal® Spring-Loaded-Pins GEFM

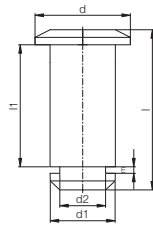
Part Number	d1 h11	d2	a	b	c	l1 ±0,5	l2	l3
GEFM-04	4	8	9,5	10,5	8	19	15	4,5
GEFM-05 DIN	5	9	12	13,5	8	23	19	5,5
GEFM-05	5	10	14	15,5	8	27	23	6,5
GEFM-06	6	10	14	15,5	8	27	23	6,5
GEFM-08	8	14	19	21,0	11	35,5	30	8,0
GEFM-10	10	18	23	25,5	14	45	38	10,0
GEFM-12	12	20	28	31,0	16	53	45	12,0
GEFM-16	16	26	36	40,0	22	73	62	16,0



Material

igumid G

▶ Seite 70.6



Dimensions [mm]

igubal® Clevis pin GBM

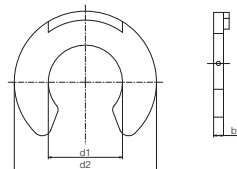
Part Number	d1	d2	d	l	l1	m	Clip
GBM-04	4,00	3,2	7,00	12,50	8,00	1,05	GSR-04
GBM-05	5,00	4,0	8,00	16,50	12,00	1,15	GSR-06
GBM-05 DIN	5,00	4,0	8,00	14,50	10,00	1,15	GSR-06
GBM-06	6,00	4,0	9,00	16,50	12,00	1,15	GSR-06
GBM-08	8,00	5,0	12,00	21,50	16,00	1,15	GSR-08
GBM-10	10,00	7,0	15,00	27,00	20,00	1,35	GSR-10
GBM-12	12,00	9,0	18,00	31,50	24,00	1,50	GSR-12
GBM-14	14,00	12,0	22,00	36,00	27,00	1,70	GSR-16
GBM-15	15,00	12,0	23,00	36,00	27,00	1,70	GSR-16
GBM-16	16,00	12,0	24,00	42,00	32,00	1,70	GSR-16
GBM-17	17,00	12,0	25,00	42,00	32,00	1,70	GSR-16
GBM-20	20,00	15,0	30,00	51,00	40,00	2,00	GSR-20



Material

igumid G

▶ Page 70.6



Dimensions [mm]

igubal® Circlip GSR

Part Number	d1	d2	b
GSR-04	3,20	7,0	1,00
GSR-06	4,00	9,0	1,10
GSR-08	5,00	11,0	1,10
GSR-10	7,00	14,0	1,30
GSR-12	9,00	18,5	1,40
GSR-16	12,00	23,0	1,60
GSR-20	15,00	28,0	1,90



Material

POM

▶ Page 70.8

igubal® Clevis Joints
mm GEFM/GBM/GSR

Phone +49 - 22 03 - 96 49-145
Fax +49 - 22 03 - 96 49-334

