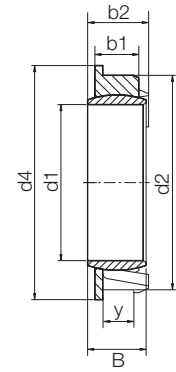
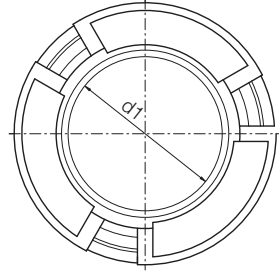




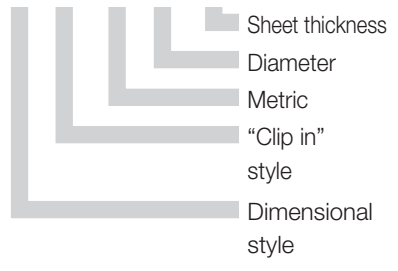
igubal® ECLM | Pivoting Clip Bearing | mm

ECLM
Pivoting Bearings
mm



Data in mm

Structure – part no.
E CL M-05-02



Phone +49 - 22 03 - 96 49-145
Fax +49 - 22 03 - 96 49-334

Special Properties

- Very easy installation by simply snapping into sheet metal
- No additional axial securing necessary
- Extremely small installation space:
Space-saving, thin-walled design
- Maintenance-free iglidur® J spherical ball



Material

Housing: igumid G
 ▶ Page 70.6
 Spherical Bearing:
 iglidur® J
 ▶ Chapter 3

igus® GmbH
51147 Cologne

Load Data– igubal® Pivoting Bearing ECLM

Part Number	Maximum static Compression Force (Short term)		Maximum static Compression (Long term)	
	radial [N]	axial [N]	radial [N]	axial [N]
ECLM-05-02	700	25	350	12,5
ECLM-06-02	700	25	350	12,5
ECLM-08-02	1000	25	500	12,5
ECLM-10-03	1400	15	700	7
ECLM-12-03	1800	20	900	10
ECLM-16-03	2800	40	1400	20

Dimensions [mm] – igubal® Pivoting Bearing ECLM

Part Number	Ø Spherical Ball d1	Spherical Ball Width B	Ø Outside d2	Ø Collar d4	Housing Width b1	Sheet thickness Y	Pivot Angle α
ECLM-05-02	5	6	12	13	2,0	3,9	25°
ECLM-06-02	6	6	12	13	2,0	3,9	18°
ECLM-08-02	8	6	14	15	2,0	3,9	16°
ECLM-10-03	10	6	16	17	3,0	4,5	12°
ECLM-12-03	12	6	18	19	3,0	4,5	12°
ECLM-16-03	16	6	22	24	3,0	4,5	12°

Available from stock

Internet www.igus.de
E-mail info@igus.de