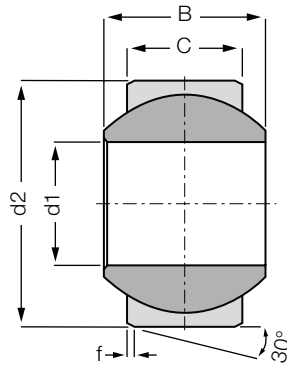
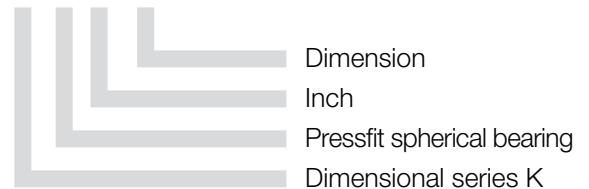


Pressfit spherical bearing: KGLI



Order key

KGLI-03



- Compensation of misalignment and edge loads
- Corrosion-resistant
- High dampening qualities
- Excellent vibration dampening
- Suitable for rotating, oscillating and linear movements



Material:

Housing: **igumid G** ► [page 1127](#)

Spherical ball: **iglidur® W300** ► [page 727](#)

Technical Data and Dimensions [Inch]

Part number	Max. static compressive strenght		Max. torque through ball [Nm]	d1 E10	d2	B	C	f	Max. pivot angle	Weight [g]
	radial [N]	axial* [N]								
KGLI-03	1,000	150	5	.1900	.5625	.312	.218	0.3	34°	1.2
KGLI-04	1,500	250	10	.2500	.6562	.375	.250	0.3	30°	1.7
KGLI-05	2,000	350	12	.3125	.7500	.437	.281	0.3	29°	2.6
KGLI-06	2,800	400	20	.3750	.8125	.500	.312	0.5	25°	3.3
KGLI-07	3,750	450	30	.4375	.9375	.562	.343	0.5	25°	4.9
KGLI-08	4,250	500	35	.5000	1.0625	.625	.390	0.5	25°	7.1
KGLI-10	5,300	750	40	.6250	1.1875	.750	.500	0.5	23°	10.2
KGLI-12	8,500	850	55	.7500	1.4375	.875	.593	0.5	23°	17.5
KGLI-16	13,600	2,500	65	1.0000	2.1250	1.375	1.005	0.5	23°	62.7

* The maximum static axial load is determined in a remote location hole.



delivery from stock
time



prices price list online
www.igus.eu/eu/kgli