



KSTM-GT

Pillow Block Bearings

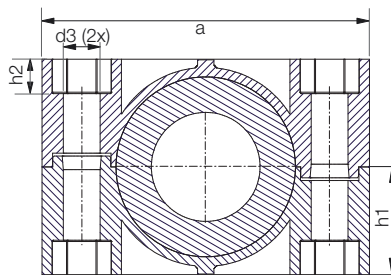
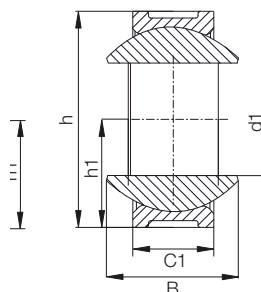
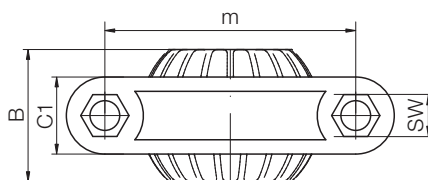
mm

Phone +49 - 22 03 - 96 49-145  
 Fax +49 - 22 03 - 96 49-334

igus® GmbH  
 51147 Cologne

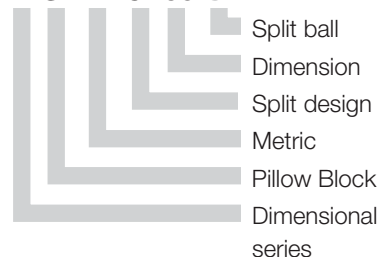
Internet [www.igus.de](http://www.igus.de)  
 E-mail [info@igus.de](mailto:info@igus.de)

53.6



Data in mm

Structure – part no.  
**K ST M-GT35 GT**



**Material**

- Housing: RN33
- ▶ Page 70.6
- Spherical Bearing: iglidur® J
- ▶ Chapter 3

**Special Properties**

- With the split ball (size 40mm), fitting is easy, and does not require shaft removal
- Maintenance-free, dry running
- For high static loads
- Space- and weight-saving design
- High stiffness
- Predictable lifetime
- Dimensions 40 and 50 also available with split ball (50 upon request)

**Load Data**

igubal® Pillow Block Bearing KSTM-GT

Part Number	Max. radial tensile strength		Max. axial tensile strength		Max. Torque	
	Short term [N]	Long term [N]	Short term [N]	Long term [N]	through ball [Nm]	fixing holes [Nm]
KSTM-GT35*	11000	5500	2500	1250	20	15
KSTM-GT40	11000	5500	2500	1250	20	15
KSTM-GT40GT**/**	11000	5500	2500	1250	20	15
KSTM-GT45*	15000	7500	3000	1500	20	20
KSTM-GT50	15000	7500	3000	1500	20	20
KSTM-GT50GT**	15000	7500	3000	1500	20	20

**Dimensions [mm]**

igubal® Pillow block Bearing KSTM-GT

Part Number	d1 (E10)	d3	h	h1	h2	SW	a	m	C1	B	Max. Pivot Angle
KSTM-GT35*	35,0	13,5	79,0	39,5	12,6	19,0	120,5	91,0	29,5	48,5	24°
KSTM-GT40	40,0	13,5	79,0	39,5	12,6	19,0	120,5	91,0	29,5	48,5	24°
KSTM-GT40GT**/**	40,0	13,5	79,0	39,5	12,6	19,0	120,5	91,0	29,5	48,5	24°
KSTM-GT45*	45,0	13,5	100,0	50,0	12,6	19,0	149,0	114,0	35,0	60,0	24°
KSTM-GT50	50,0	13,5	100,0	50,0	12,6	19,0	149,0	114,0	35,0	60,0	24°
KSTM-GT50GT**	50,0	13,5	100,0	50,0	12,6	19,0	149,0	114,0	35,0	60,0	24°

\* Diameter given by iglidur® J bore reducer;

\*\* split Pillow Block with split ball

\*\*\* Available upon request