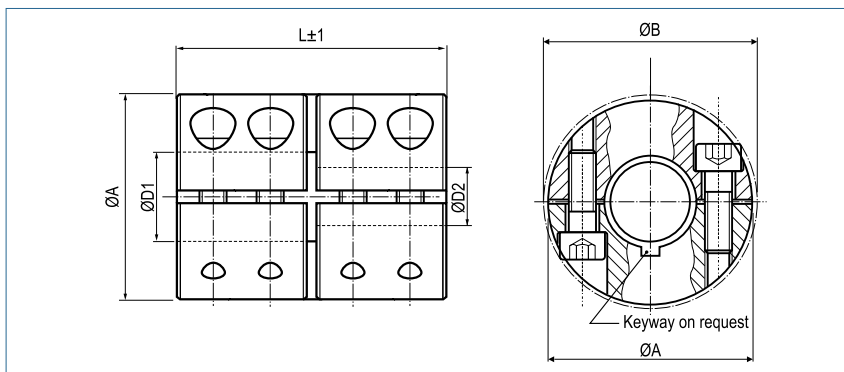


Rigid Shaft Coupling

split



Order Code for Standard Coupling

**KBST-G - 50**

Type Size

This coupling will automatically be supplied with unique bore 50H7.

Order Code for Coupling with different Bore Diameters

**KBST-G - 50 - 45 - 48**

Type Size D1 D2

This coupling will be supplied with the dimensions of type KBST-50 but with a bore combination 45H7 - 48H7.

| Rigid Shaft Coupling split - Steel blackened |                 |                          |                         |      |      |      |                  |                             |        |
|--|-----------------|--------------------------|-------------------------|------|------|------|------------------|-----------------------------|--------|
| Size   | Torque Steel Nm | Dimensions - Dimensions  |                         |      |      |      | Screws (ISO4762) | Tightening Torque Screws Nm | Mass g |
|  |                 | Standard Bore D1 / D2 H7 | different Bores min~max | A mm | B mm | L mm |                  |                             |        |
| 6  | 30              | 6                        | 5-7                     | 18   | 21.2 | 30   | M3x8             | 2                           | 47     |
| 8  | 50              | 8                        | 5-12                    | 24   | 26.8 | 35   | M3x10            | 3                           | 102    |
| 10   | 100             | 10                       | 5-15                    | 29   | 32.7 | 45   | M4x12            | 4.5                         | 185    |
| 12   | 100             | 12                       | 5-15                    | 29   | 32.7 | 45   | M4x12            | 4.5                         | 180    |
| 14   | 190             | 14                       | 10-17                   | 34   | 39.1 | 50   | M5x16            | 9                           | 272    |
| 15   | 190             | 15                       | 10-17                   | 34   | 39.1 | 50   | M5x16            | 9                           | 266    |
| 16   | 190             | 16                       | 10-17                   | 34   | 39.1 | 50   | M5x16            | 9                           | 261    |
| 20   | 350             | 20                       | 10-24                   | 42   | 48.2 | 65   | M6x16            | 15                          | 518    |
| 25   | 390             | 25                       | 10-26                   | 45   | 50.8 | 75   | M6x16            | 15                          | 623    |
| 30   | 475             | 30                       | 20-32                   | 53   | 58.1 | 83   | M6x18            | 15                          | 920    |
| 35   | 1100            | 35                       | 20-40                   | 67   | 74.1 | 95   | M8x25            | 40                          | 1880   |
| 40   | 1325            | 40                       | 30-50                   | 77   | 83.4 | 108  | M8x25            | 40                          | 2710   |
| 50   | 2250            | 50                       | 40-52                   | 85   | 93.2 | 124  | M10x25           | 84                          | 3520   |

| Ø Bore (mm) |    |    |    |     |     |     |     |     |     |     |      |      |      |      |      |      |      |      |      |      |      |
|-------------|----|----|----|-----|-----|-----|-----|-----|-----|-----|------|------|------|------|------|------|------|------|------|------|------|
| Size        | 5  | 6  | 8  | 10  | 12  | 14  | 16  | 18  | 20  | 22  | 26   | 28   | 30   | 32   | 34   | 38   | 42   | 44   | 48   | 50   | 52   |
| 6           | 29 | 35 |    |     |     |     |     |     |     |     |      |      |      |      |      |      |      |      |      |      |      |
| 8           | 29 | 35 | 47 | 58  | 70  |     |     |     |     |     |      |      |      |      |      |      |      |      |      |      |      |
| 10          | 52 | 62 | 83 | 103 | 124 | 145 |     |     |     |     |      |      |      |      |      |      |      |      |      |      |      |
| 12          | 52 | 62 | 83 | 103 | 124 | 145 |     |     |     |     |      |      |      |      |      |      |      |      |      |      |      |
| 14          |    |    |    | 168 | 202 | 235 | 269 |     |     |     |      |      |      |      |      |      |      |      |      |      |      |
| 15          |    |    |    | 168 | 202 | 235 | 269 |     |     |     |      |      |      |      |      |      |      |      |      |      |      |
| 16          |    |    |    | 168 | 202 | 235 | 269 |     |     |     |      |      |      |      |      |      |      |      |      |      |      |
| 20          |    |    |    | 237 | 284 | 332 | 379 | 427 | 474 | 521 |      |      |      |      |      |      |      |      |      |      |      |
| 25          |    |    |    | 237 | 284 | 332 | 379 | 427 | 474 | 521 | 616  |      |      |      |      |      |      |      |      |      |      |
| 30          |    |    |    |     |     |     |     |     | 474 | 521 | 616  | 664  | 711  | 758  |      |      |      |      |      |      |      |
| 35          |    |    |    |     |     |     |     |     | 847 | 932 | 1102 | 1186 | 1271 | 1356 | 1441 | 1610 |      |      |      |      |      |
| 40          |    |    |    |     |     |     |     |     |     |     |      |      | 1271 | 1356 | 1441 | 1610 | 1780 | 1864 | 2034 | 2119 |      |
| 50          |    |    |    |     |     |     |     |     |     |     |      |      |      |      |      |      | 2825 | 2960 | 3229 | 3363 | 3498 |

**+** Keyways according DIN 6885/1 are possible for all bore combinations.