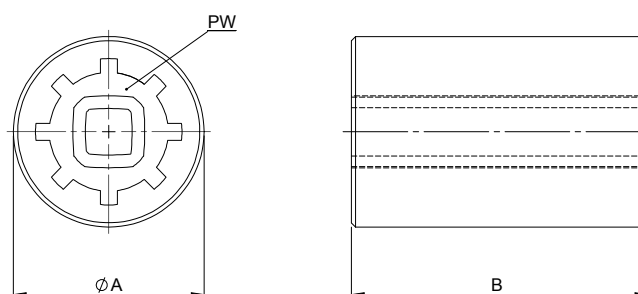


## Sliding sleeves

Sliding sleeves can be used when installing lifgo® or lean SL® units in gearboxes with hollow shafts/shrink discs. Profile shafts with sliding sleeves create an interlocking, rotationally rigid connection between gearboxes and gearmotors.



**!** When a sliding sleeve and profile shaft are used, the mechanical synchronicity of the system is maintained.

Sliding sleeves for lifgo® & lean SL®	Unit	5.0	5.1	5.3
A	mm	Ø 35 h7	Ø 45 h7	Ø 90 h7
B	mm	60	70	90
Profile shaft	PW	PG 14	PG 20	KW 42
Weight	kg	0,40	0,72	3,63

Article number	lifgo® & lean SL®	5.0	5.1	5.3
Sliding sleeve		500 439	500 440	500 441