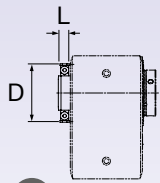
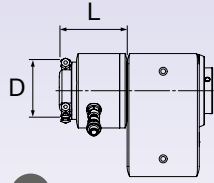


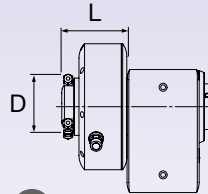
## Ultra-compact, for air and oil



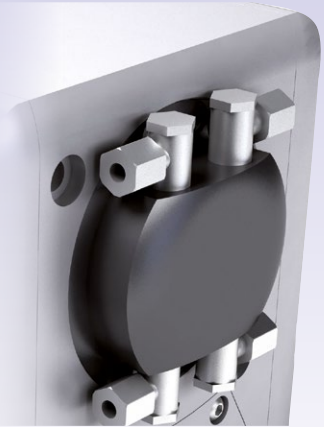
**1**  
directly on the spindle



**2**  
in combination with  
WMS RxN-2xxx



**3**  
in combination with  
WMS RxN-8xxx



### Rotary unions for rotary table

Item no.	Flutes	Oil	Air	D [mm]	L [mm]			Weight [mm]
					1	2	3	
507	DDF.507-04	4	•	•	100	30		2.62
	DDF.507-04-2	4	•	•		119		
510	DDF.510-04	4	•	•	100	21		2.64
	DDF.510-06	6	•	•				
510	DDF.510-04-2	4	•	•	100	101		
	DDF.510-04-7	4	•	•				96
510	DDF.510-06-7	6	•	•	100			
	DDF.520-04	4	•	•		42		
520	DDF.520-06	6	•	•	100			
	DDF.520-04-2	4	•	•		134		
520	DDF.520-04-7	4	•	•	100			
	DDF.520-06-7	6	•	•				129
530	DDF.530-04	4	•	•	100	34		
	DDF.530-06	6	•	•				
530	DDF.530-04-2	4	•	•	100			
	DDF.530-04-7	4	•	•				113
530	DDF.530-06-7	6	•	•	100			
	DDF.530-06-7	6	•	•				102

All rotary unions can be used on all T-type rotary tables without increasing the center height so long as no angular position measuring system is used.



Take-off or medium transfer

### Raised center height on T-type rotary tables

The center height changes only if the rotary union is used on an angular position measurement system and only for the following types:

Item no.	Increase	1			Weight [kg]
		DDF	WMS2+DDF	WMS7+DDF	
TIP1	without	•			
	SPH.TIP1-40	•	•		
TIP2	without	•			
	SPH.TIP2-40	•	•	•	
TIP3	without	•			
	SPH.TIP3-50	•	•	•	
TAP1	without	•			
	SPH.TAP1-40	•			
TAP2	without	•			
	SPH.TAP2-60	•	•	•	
TAP3	without	•			
	SPH.TAP3-50	•	•	•	
TOP1	without	•			
	SPH.TOP1-40	•	•		
TOP2	without	•			
	SPH.TOP2-60	•	•	•	
TOP3	without	•			
	SPH.TOP3-50	•	•	•	
TOP3	without	•			
	SPH.TOP3-100	•	•	•	

### Rotary unions (DDF) for counter bearing (GLA)

Item no.	Flutes	Oil	Air	D [mm]	L [mm]	Weight [kg]	
507	DDG.507-04-TOP	4	•	•	100	30	
510/520/530	DDG.520-04-TOP	4	•	•	166	44	2.18
	DDG.520-06-TOP	6	•	•	166	44	

### DDF on GLA for T-type rot. table

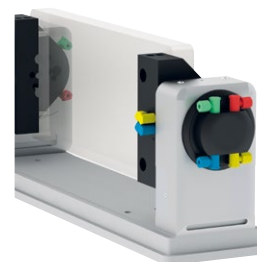


4 connections, at rear

### DDF on GLA for rotoFIX



2 connections facing up



2 connections facing down