

Spray characteristic: Flat spray pattern with even spray distribution  
 Connection: Dovetail 3/8" self aligning

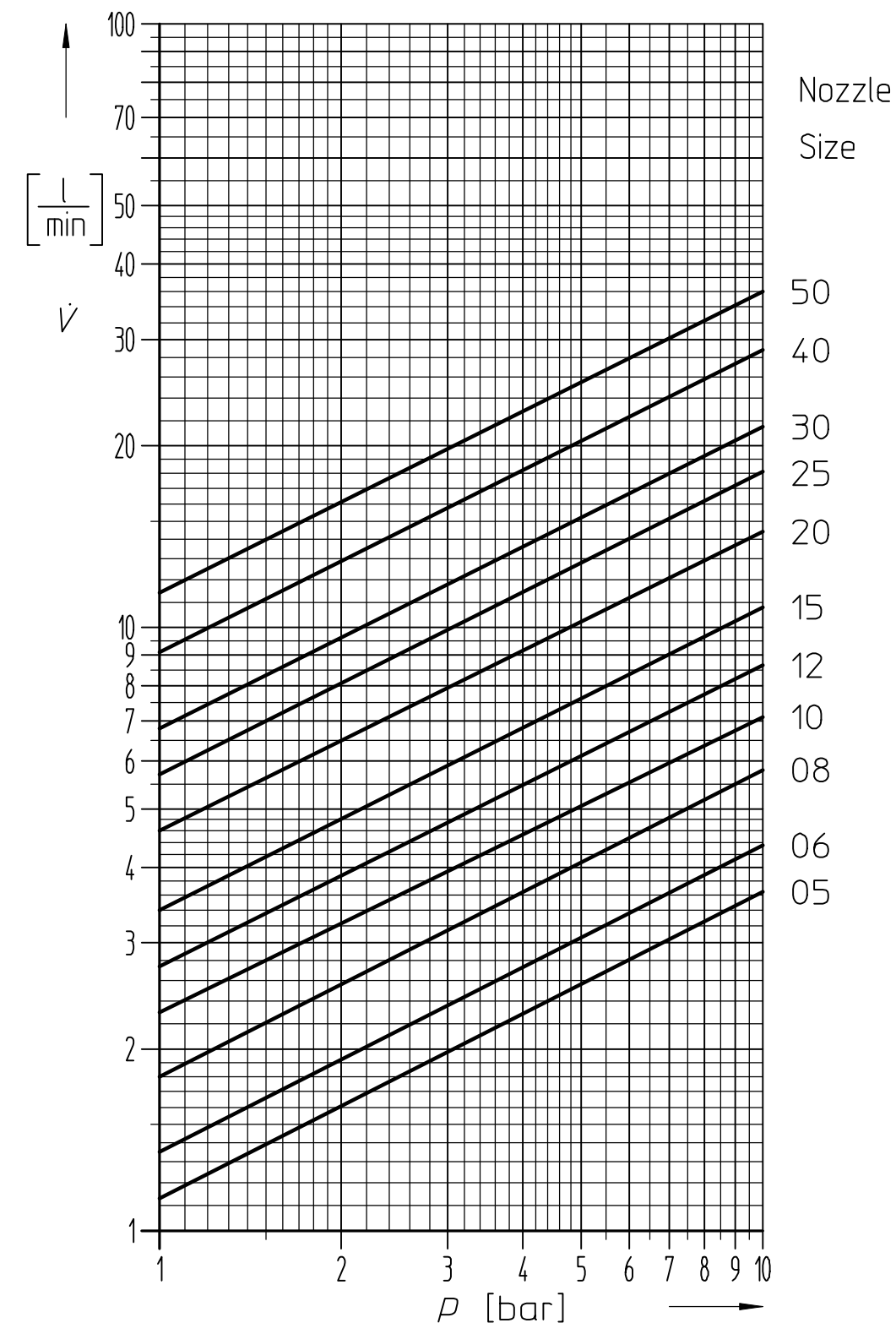
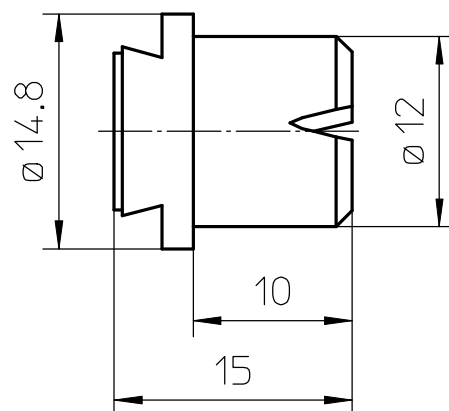
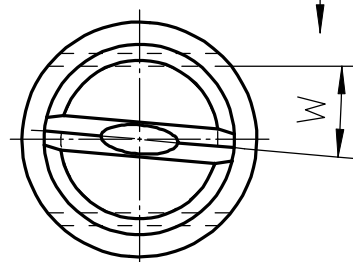
Ordering Information / Part No.:  
**D25374-9040E-SS**

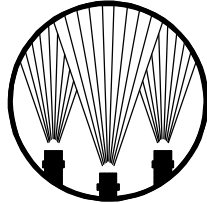
Material code	Material	Description
no code	2.0401	Brass
SS	1.4305	Stainless Steel
1.4571	1.4571	Stainless Steel

Code	W Self aligned $\nabla$
D25374	5°
D26553	0°

$\nabla$ Code	Capacity code											Spray- $\nabla$ at 3 bar
	05	06	08	10	12	15	20	25	30	40	50	
90	0.65	0.7	1.0	1.2	1.2	1.3	1.4	1.5	1.5	1.9	2.3	90°
120	*	0.55	0.55	0.6	0.65	0.8	1.0	1.2	1.3	1.6	1.8	120°

\* = not available size      Narrowest cross selection



Description: <b>Flat spray Tips E-Series</b>		 <b>Spraying Systems</b> <i>Experts in Spray Technology</i> P.O. Box 900928 D-21049 Hamburg ☎ 49/40/76 60 01-0
Part No.:	Data Sheet No.: <b>DS25374_GB</b>	
Replaced Dwg.:	By: 060817 RF A4	TB RF CAD