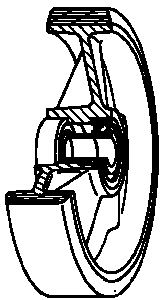


SERIES 62



**“TR-ROLL” POLYURETHANE WHEELS,
ALUMINIUM CENTRE,
SWIVEL TOP PLATE BRACKET TYPE NL
WITH BRAKE**

Wheel description

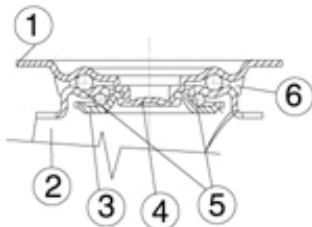


Tread: “TR-ROLL” polyurethane, hardness 75 Shore A.

Centre: aluminium.

Hub: the housing is obtained by moulding and contains ball bearings series Z

Bracket description



Standard duty bracket type NL (max. carrying capacity 400 daN)

1) **Plate:** electrolytically galvanised steel plate

2) **Fork:** electrolytically galvanised steel plate

3) **Ball Racing Ring:** electrolytically galvanised steel plate

4) **King Pin:** incorporated in top plate and cold riveted

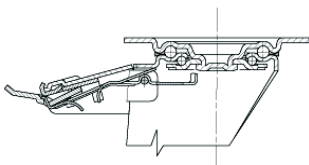
5) **Swivel actions:** double ring of greased balls

6) **Dust seal:** orange polyethylene

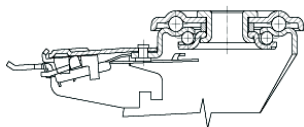
Finishing: electrolytic galvanisation

Fitting: top plate

Brake description



Diameters 80-150 mm



Diameters 150-200 mm

Front-locking brake

This brake fully locks wheel and castor rotation.

Thanks to its optimised dimensions and fold-away pedal, the brake is easy to engage and extremely compact.

The hardened carbon steel spring has very high corrosion resistance.