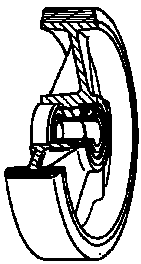




## SERIES 63

### VULKOLLAN® WHEELS, CAST IRON CENTRE, SWIVEL TOP PLATE BRACKET TYPE NL WITH BRAKE

#### Wheel description

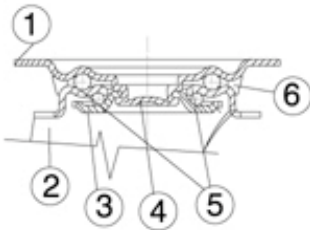


**Tread:** Vulkollan® polyurethane tread; hardness 93 +/-2 Shore A

**Centre:** cast iron.

**Hub:** the housing is obtained by moulding and turning and contains ball bearings series Z

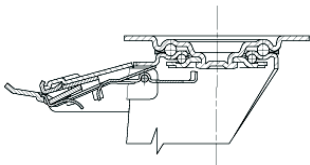
#### Bracket description



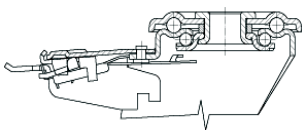
#### Standard duty bracket type NL (max. carrying capacity 400 daN)

- 1) **Plate:** electrolytically galvanised steel plate
  - 2) **Fork:** electrolytically galvanised steel plate
  - 3) **Ball Racing Ring:** electrolytically galvanised steel plate
  - 4) **King Pin:** incorporated in top plate and cold riveted
  - 5) **Swivel actions:** double ring of greased balls
  - 6) **Dust seal:** orange polyethylene
- Finishing:** electrolytic galvanisation  
**Fitting:** top plate

#### Brake description



Diameters 80-150 mm



Diameters 150-200 mm

#### Front-locking brake

This brake fully locks wheel and castor rotation.

Thanks to its optimised dimensions and fold-away pedal, the brake is easy to engage and extremely compact.

The hardened carbon steel spring has very high corrosion resistance.