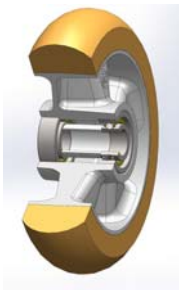


## SERIES 65ER



**THICK “TR” POLYURETHANE WHEELS WITH ERGONOMIC ROUND PROFILE, ALUMINIUM CENTRE, SWIVEL TOP PLATE BRACKET TYPE EP WITH ADJUSTABLE REAR BRAKE**

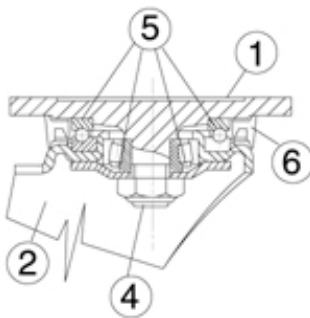
### Wheels description



**Tread:** Thick TR polyurethane wheels with round ergonomic profile, hardness 95 Shore A.  
**Centre:** cast aluminium  
**Hub:** the housing is obtained by moulding and contains ball bearings series Z.

### Bracket description

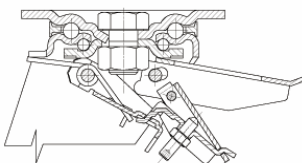
**Extra-heavy duty bracket type EP (max. load capacity 1600 daN)**



- 1) **Plate:** electrolytically galvanised forged steel
  - 2) **Fork:** electrolytically galvanised steel plate
  - 4) **Central pin:** solid with the machined plate
  - 5) **Swivel actions:** axial ball bearing and taper roller bearing
  - 6) **Dust seal:** orange polyethylene
- Finish:** white galvanisation  
**Fitting:** top plate

### Brake description

#### Adjustable rear brake



Double-action brake that locks the wheel and the castor at the same time. The brake is efficient and easy to use: a simple top-to-bottom movement using the tip of the foot on two independent pedals is all that's needed to engage and release the lock quickly and smoothly. Locking force can be adjusted using an M8 socket screw.