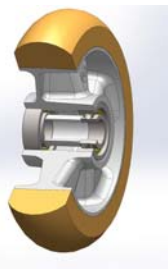


SERIES 65ER



THICK “TR” POLYURETHANE WHEELS WITH ERGONOMIC ROUND PROFILE, ALUMINIUM CENTRE, SWIVEL TOP PLATE BRACKET TYPE M WITH ADJUSTABLE FRONT-LOCKING BRAKE

Wheel description



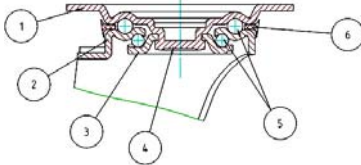
Tread: Thick TR polyurethane wheels with round ergonomic profile, hardness 95 Shore A.

Centre: cast aluminium

Hub: the housing is obtained by moulding and contains ball bearings series Z.

Bracket description

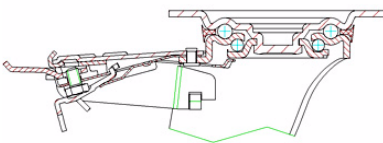
Medium duty racket type M (max. load capacity 500 daN)



- 1) **Plate:** electrolytically galvanised steel plate
 - 2) **Fork:** electrolytically galvanised steel plate
 - 3) **Ball Racing Ring:** electrolytically galvanised steel plate
 - 4) **King Pin:** incorporated in top plate and cold riveted
 - 5) **Swivel actions:** double ring of greased balls
 - 6) **Dust seal:** blue polyethylene
- Finishing:** electrolytic galvanisation
Fitting: top plate

Brake description

Adjustable front-locking brake



This brake fully locks wheel and castor rotation.

Thanks to its optimised dimensions and fold-away pedal, the brake is easy to engage and extremely compact.

Locking force can be adjusted using an M8 socket screw – 13 mm spanner.