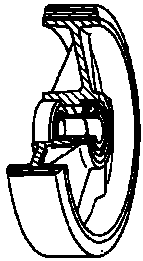


SERIES 66



**“TR” POLYURETHANE WHEELS,
POLYAMIDE 6 CENTRE,
SWIVEL BOLT HOLE BRACKET TYPE “NLX”**

Wheel description



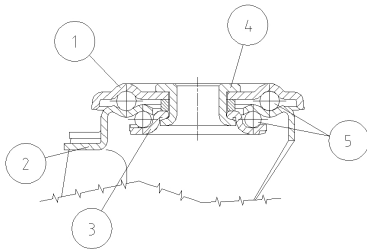
Tread: “TR” polyurethane tread, hardness 95+/-3 Shore A; excellent rolling resistance and elasticity, highly resistant to wear and to tearing.

Centre: polyamide 6.

Hub: the hub is available with plain bearing and with stainless steel roller bearing.

Bracket description

Standard duty bracket type NLX (max. carrying capacity 400 daN)



1) **Plate:** AISI 304 stainless steel

2) **Fork:** AISI 304 stainless steel

3) **Ball Racing Ring:** AISI 304 stainless steel

4) **King Pin:** incorporated in top plate and cold riveted

5) **Swivel actions:** double ring of greased balls

Fitting: bolt hole