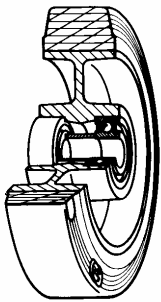


## SERIES 72



**SIGMA ELASTIC RUBBER WHEELS  
CAST IRON CENTRE  
SWIVEL TOP PLATE BRACKET TYPE EP  
WITH REAR ADJUSTABLE BRAKE**

### Wheel description



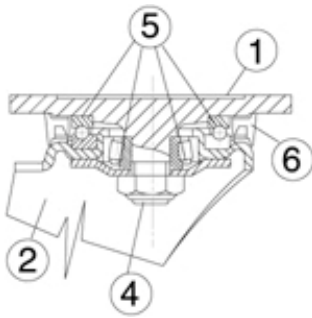
**Tread:** Sigma Elastic rubber tread; hardness 70 +/-3 Shore A.

**Centre:** cast iron.

**Hub:** **Hub:** The housing is obtained by moulding and turning and contains ball bearings series Z.

### Bracket description

**Extra-heavy duty bracket type EP (max. load capacity 1600 daN)**



1) **Plate:** electrolytically galvanised forged steel

2) **Fork:** electrolytically galvanised steel plate

4) **Central pin:** solid with the machined plate

5) **Swivel actions:** axial ball bearing and taper roller bearing

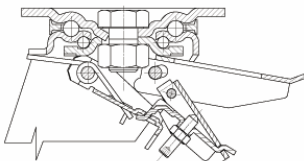
6) **Dust seal:** orange polyethylene

**Finish:** white galvanisation

**Fitting:** top plate

### Brake description

**Rear adjustable brake**



Double-action brake that locks the wheel and the castor at the same time. The brake is efficient and easy to use: a simple top-to-bottom movement using the tip of the foot on two independent pedals is all that's needed to engage and release the lock quickly and smoothly. Locking force can be adjusted using an M8 socket screw.