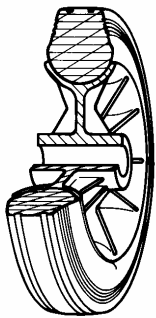


## SERIES 22



### STANDARD RUBBER WHEELS POLYPROPYLENE CENTRE SWIVEL BOLT HOLE BRACKET TYPE "NL" WITH BRAKE

#### Wheel description



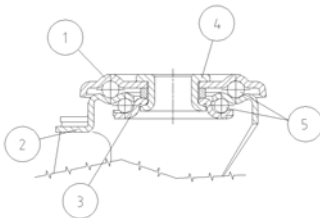
**Tread:** Standard non-marking rubber tread; hardness 80 Shore A.

**Centre:** polypropylene.

**Hub:** the hub is available with plain bore and with roller bearings.

#### Bracket description

Standard duty bracket type NL (max. carrying capacity 400 daN)



1) **Plate:** electrolytically galvanised steel plate

2) **Fork:** electrolytically galvanised steel plate

3) **Ball Racing Ring:** electrolytically galvanised steel plate

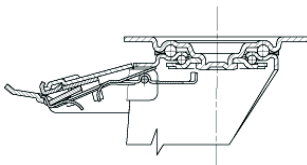
4) **King Pin:** incorporated in top plate and cold riveted

5) **Swivel actions:** double ring of greased balls

**Finishing:** electrolytic galvanisation

**Fitting:** bolt hole

#### Brake description



Diam. 80-150 mm

#### Front-locking brake

This brake fully locks wheel and castor rotation.

Thanks to its optimised dimensions and fold-away pedal, the brake is easy to engage and extremely compact.

The hardened carbon steel spring has very high corrosion resistance.



Diam. 150-200 mm