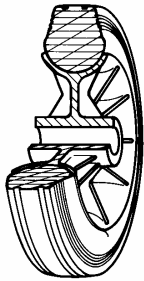


SERIES 52



STANDARD RUBBER WHEELS POLYPROPYLENE CENTRE SWIVEL BOLT HOLE BRACKET TYPE "NL"

Wheel description



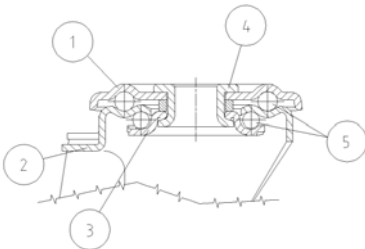
Tread: Standard rubber tread; hardness 85 +/-3 Shore A.

Centre: Polypropylene centre.

Hub: the hub is available with plain bore and with roller bearings.

Bracket description

Standard duty bracket type NL (max. carrying capacity 400 daN)



1) **Plate:** electrolytically galvanised steel plate

2) **Fork:** electrolytically galvanised steel plate

3) **Ball Racing Ring:** electrolytically galvanised steel plate

4) **King Pin:** incorporated in top plate and cold riveted

5) **Swivel actions:** double ring of greased balls

Finishing: electrolytic galvanisation

Fitting: bolt hole