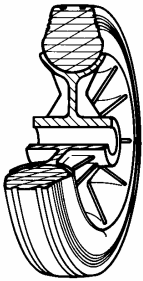


## SERIES 52



### STANDARD RUBBER WHEELS POLYPROPYLENE CENTRE SWIVEL BOLT HOLE BRACKET TYPE “SL”

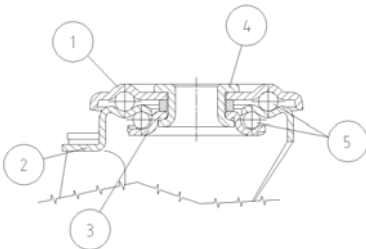
#### Wheel description



- Tread:** Standard rubber tread; hardness 85 +/-3 Shore A.  
**Centre:** Polypropylene centre.  
**Hub:** the hub is available with plain bore and with roller bearings.

#### Bracket description

**Standard duty bracket type SL (max. carrying capacity 110 daN)**



- 1) **Plate:** electrolytically galvanised steel plate
  - 2) **Fork:** electrolytically galvanised steel plate
  - 3) **Ball Racing Ring:** electrolytically galvanised steel plate
  - 4) **King Pin:** incorporated in top plate and cold riveted
  - 5) **Swivel actions:** double ring of greased balls
- Finishing:** electrolytic galvanisation  
**Fitting:** bolt hole