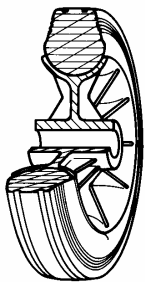


SERIES 52



STANDARD RUBBER WHEELS POLYPROPYLENE CENTRE SWIVEL TOP PLATE BRACKET TYPE "SL" WITH BRAKE

Wheel description



- Tread:** Standard rubber tread; hardness 85 +/-3 Shore A.
Centre: Polypropylene centre.
Hub: the hub is available with plain bore and with roller bearings.

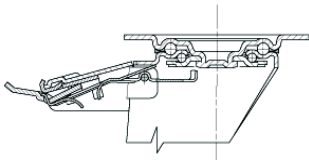
Bracket description

Standard duty bracket type SL (max. carrying capacity 110 daN)

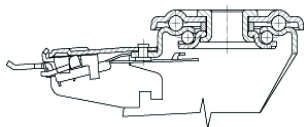


- 1) **Plate:** electrolytically galvanised steel plate
 - 2) **Fork:** electrolytically galvanised steel plate
 - 3) **Ball Racing Ring:** electrolytically galvanised steel plate
 - 4) **King Pin:** incorporated in top plate and cold riveted
 - 5) **Swivel actions:** double ring of greased balls
- Finishing:** electrolytic galvanisation
Fitting: top plate

Brake description



Diameters 80-150 mm



Diameters 150-200 mm

Front-locking brake

This brake fully locks wheel and castor rotation.
Thanks to its optimised dimensions and fold-away pedal, the brake is easy to engage and extremely compact.

The hardened carbon steel spring has very high corrosion resistance.