

SERIES 71



GREY NON-MARKING THERMOPLASTIC RUBBER WHEELS, POLYPROPYLENE CENTRE, SWIVEL "ZAMA" STEM BRACKET WITH BRAKE

Wheel description



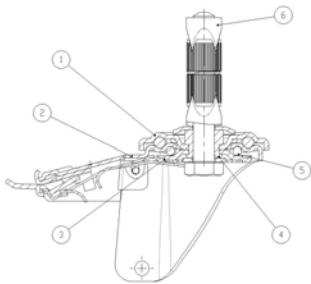
Tread: grey non-marking thermoplastic rubber tread, hardness 85+/-4 Shore A; excellent rolling resistance and elasticity.

Centre: polypropylene.

Hub: the hub is available with plain bearing.

Bracket description

Standard duty bracket type NL (max. carrying capacity 150 daN)



1) **Plate:** electrolytically galvanised steel plate

2) **Fork:** electrolytically galvanised steel plate

3) **Ball Racing Ring:** electrolytically galvanised steel plate

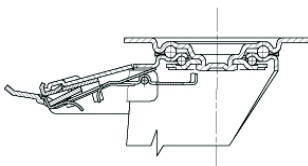
4) **King Pin:** incorporated in top plate and cold riveted

5) **Swivel actions:** double ring of greased balls

Finishing: electrolytic galvanisation

Fitting: stem

Brake description



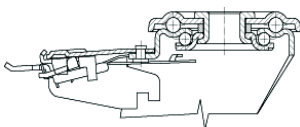
Diam. 80-150 mm

Front-locking brake

This brake fully locks wheel and castor rotation.

Thanks to its optimised dimensions and fold-away pedal, the brake is easy to engage and extremely compact.

The hardened carbon steel spring has very high corrosion resistance.



Diam. 150-200 mm