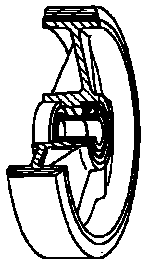


## SERIES 71



**GREY NON-MARKING THERMOPLASTIC RUBBER WHEELS,  
POLYPROPYLENE CENTRE,  
SWIVEL BOLT HOLE BRACKET TYPE “NLX”**

### Wheel description

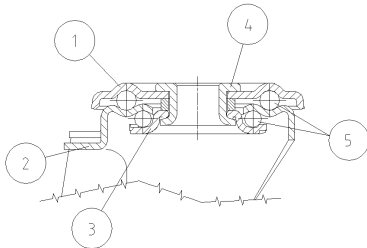


**Tread:** grey non-marking thermoplastic rubber tread, hardness 85+/-4 Shore A; excellent rolling resistance and elasticity.

**Centre:** polypropylene.

**Hub:** the hub is available with plain bearing and with stainless steel roller bearing.

### Bracket description



**Standard duty bracket type NLX (max. carrying capacity 400 daN)**

1) **Plate:** AISI 304 stainless steel

2) **Fork:** AISI 304 stainless steel

3) **Ball Racing Ring:** AISI 304 stainless steel

4) **King Pin:** incorporated in top plate and cold riveted

5) **Swivel actions:** double ring of greased balls

**Fitting:** bolt hole