

SERIES 60



INJECTION POLYURETHANE WHEELS, POLYAMIDE 6 CENTRE, SWIVEL BOLT HOLE BRACKET TYPE “NLX” WITH BRAKE

Wheel description



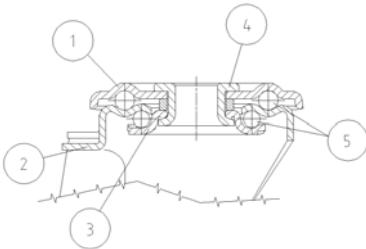
Tread: injection polyurethane tread, hardness 55 Shore D; excellent rolling resistance and elasticity, good resistant to wear and to tearing.

Centre: polyamide 6.

Hub: the hub is available with plain bearing, with stainless steel roller bearings and with stainless steel ball bearing.

Bracket description

Standard duty bracket type NLX (max. carrying capacity 400 daN)



1) **Plate:** AISI 304 stainless steel

2) **Fork:** AISI 304 stainless steel

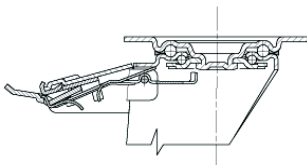
3) **Ball Racing Ring:** AISI 304 stainless steel

4) **King Pin:** incorporated in top plate and cold riveted

5) **Swivel actions:** double ring of greased balls

Fitting: bolt hole

Brake description



Diam. 80-150 mm

Front-locking brake

This brake fully locks wheel and castor rotation.

Thanks to its optimised dimensions and fold-away pedal, the brake is easy to engage and extremely compact.

The stainless steel spring has very high corrosion resistance.



Diam. 150-200 mm