

## TWIN 32 SERIES



**TWIN SOLID POLYAMIDE 6 WHEELS FOR INSTITUTIONAL APPLICATIONS**  
**SWIVEL TOP PLATE BRACKETS WITH FRONT LOCKING BRAKE**

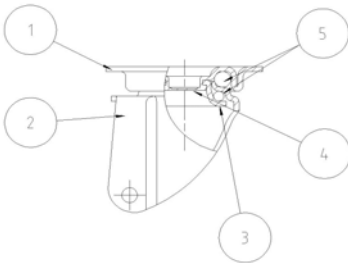
### Wheel description



**Wheel:** solid polyamide 6 wheels.  
**Hub:** the plain bearing bore results from a hole in the material forming the centre of the wheel and contains the axle.

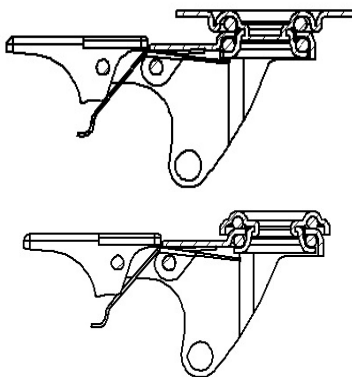
### Bracket description

**Light duty bracket (max. carrying capacity 80 daN)**



- 1) **Plate:** electrolytically galvanised steel plate
  - 2) **Fork:** electrolytically galvanised steel plate
  - 3) **Ball Racing Ring:** electrolytically galvanised steel plate
  - 4) **King Pin:** incorporated in top plate and cold riveted
  - 5) **Swivel actions:** double ring of greased balls
- Finishing:** electrolytic galvanisation  
**Fitting:** top plate

### Brake description



#### Front-locking brake

This brake fully locks wheel and castor rotation.  
The hardened carbon steel spring has very high corrosion resistance.