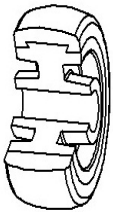


## TWIN 36 SERIES



**TWIN THERMOPLASTIC POLYURETHANE WHEELS FOR INSTITUTIONAL APPLICATIONS  
SWIVEL BOLT HOLE BRACKETS WITH FRONT LOCKING BRAKE**

### Wheel description



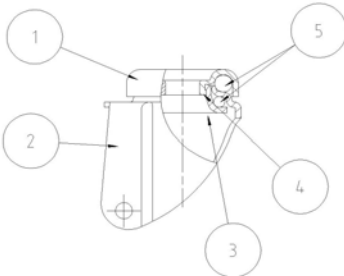
**Wheel:** Thermoplastic polyurethane wheels

**Centre:** Polyamide 6

**Hub:** the plain bearing bore results from a hole in the material forming the centre of the wheel and contains the axle.

### Bracket description

**Light duty bracket (max. carrying capacity 140 daN)**



1) **Plate:** electrolytically galvanised steel plate

2) **Fork:** electrolytically galvanised steel plate

3) **Ball Racing Ring:** electrolytically galvanised steel plate

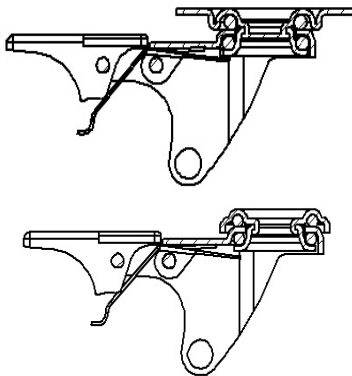
4) **King Pin:** incorporated in top plate and cold riveted

5) **Swivel actions:** double ring of greased balls

**Finishing:** electrolytic galvanisation

**Fitting:** bolt hole

### Brake description



#### Front-locking brake

This brake fully locks wheel and castor rotation.

The hardened carbon steel spring has very high corrosion resistance.