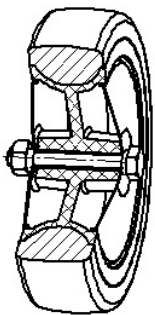


SERIES 37



GREY RUBBER INSTITUTIONAL WHEELS POLYAMIDE CENTRE WITH THREADGUARDS SWIVEL STEM BRACKETS WITH BRAKE

Wheel description



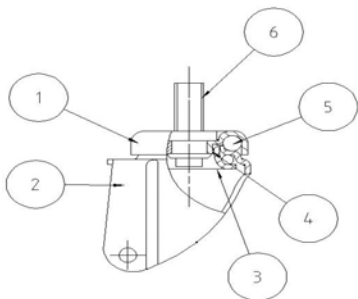
Tread: grey non-marking rubber tread.

Centre: polyamide centre with threadguards.

Hub: the plain bearing bore results from a hole in the material forming the centre of the wheel and contains the axle.

Bracket description

Light duty bracket (max. carrying capacity 80 daN)



1) **Plate:** electrolytically galvanised steel plate

2) **Fork:** electrolytically galvanised steel plate

3) **Ball Racing Ring:** electrolytically galvanised steel plate

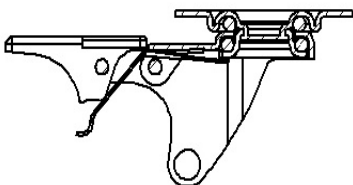
4) **King Pin:** incorporated in top plate and cold riveted

5) **Swivel actions:** double ring of greased balls

6) **Fitting:** stem

Finishing: electrolytic galvanisation

Brake description



Front-locking brake

This brake fully locks wheel and castor rotation.

The hardened carbon steel spring has very high corrosion resistance.

