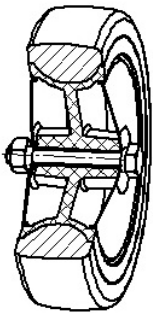


## SERIES 37



### GREY RUBBER INSTITUTIONAL WHEELS POLYAMIDE CENTRE WITH THREADGUARDS SWIVEL TOP PLATE BRACKETS WITH BRAKE

#### Wheel description



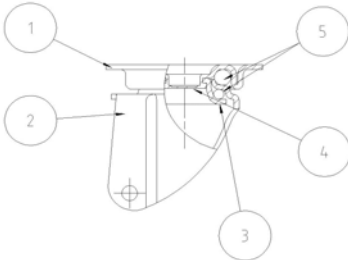
**Tread:** grey non-marking rubber tread.

**Centre:** polyamide centre with threadguards.

**Hub:** the plain bearing bore results from a hole in the material forming the centre of the wheel and contains the axle.

#### Bracket description

**Light duty bracket (max. carrying capacity 80 daN)**



1) **Plate:** electrolytically galvanised steel plate

2) **Fork:** electrolytically galvanised steel plate

3) **Ball Racing Ring:** electrolytically galvanised steel plate

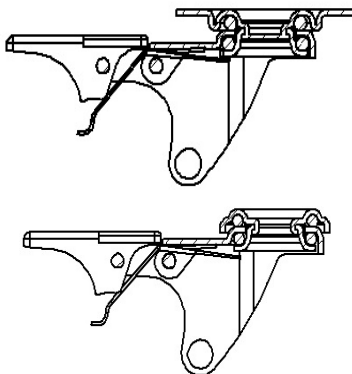
4) **King Pin:** incorporated in top plate and cold riveted

5) **Swivel actions:** double ring of greased balls

**Finishing:** electrolytic galvanisation

**Fitting:** top plate

#### Brake description



#### Front-locking brake

This brake fully locks wheel and castor rotation.

The hardened carbon steel spring has very high corrosion resistance.