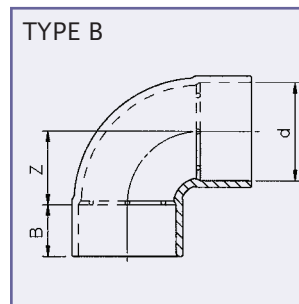
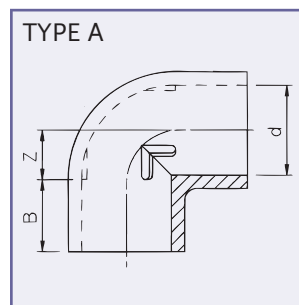


Elbow 90°

- Knie 90°
- Winkel 90°
- Coude 90°
- Gomito 90°
- Codo 90°



equal/gelijk/eben/égal/uguale/igual

Type A $R = 0,5 d$
 Type B $R = 0,75 d$

Art.code	d	Z	B	Type	PN	Quantity
2.25.010	10	6	12	A	16	250 (5x50)
2.25.012*	12	7	12	A	16	250 (5x50)
2.25.016*	16	9	14	A	16	250 (5x50)
2.25.020*	20	11.5	16	A	16	200 (4x50)
2.25.025*	25	14	19	A	16	350
2.25.032*	32	18	22	A	16	250
2.25.033	32	18	22	A	10	250
2.25.040*	40	22	26	A	16	175
2.25.041	40	22	26	A	10	175
2.25.050*	50	27.5	31	A	16	100
2.25.051	50	27.5	31	A	10	100
2.25.063*	63	32.5	38	A	16	50
2.25.064	63	32.5	38	A	10	55
2.25.075	75	38.5	44	A	16	30
2.25.076	75	38.5	44	A	10	30
2.25.090	90	46	51	A	16	17
2.25.091	90	46	51	A	10	17
2.25.110	110	56	61	A	16	12
2.25.111	110	56	61	A	10	12
2.25.125	125	63.5	69	A	16	6
2.25.140	140	71	76	A	16	5
2.25.160	160	83	87	A	16	2
2.25.200	200	106	107	A	10	1
2.25.225	225	118.5	120	A	10	1
2.25.250	250	131	132	A	10	1
2.25.280	280	210	147	B	10	1
2.25.315	315	237	165	B	10	1
2.25.400	400	300	207	B	6	1

* = kiwa norm PN 16