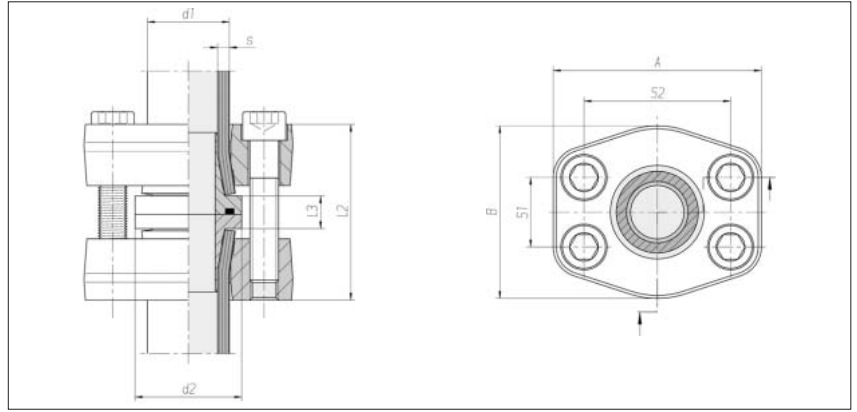


Tube-to-tube flange couplings ZAKO system

Hole pattern according to
SAE J 518 C / ISO 6162
High-pressure series
(6000 psi)

Max. permissible operating
pressure (PB) 400 bar



Flange size	Tube d1 x s	d2	l2 approx.	l3	S1	S2	A	B	4 x cheese head screw	Nm*	kg/100 approx.	Order No. complete	Order No. ***
1/2"	16 x 2	30	61.5	13.5	18.3	40.5	56	48	M 8 x 50	35	72.0	0 5 14 50 19 00**	0 5 14 50 19 86
1/2"	16 x 2.5	30	61.5	13.5	18.3	40.5	56	48	M 8 x 50	35	72.0	0 5 14 30 19 00	0 5 14 30 19 86
1/2"	16 x 3	30	61.5	13.5	18.3	40.5	56	48	M 8 x 50	35	72.0	0 5 14 31 19 00	0 5 14 31 19 86
3/4"	20 x 2.5	38	71.5	13.5	23.9	50.8	71	60	M 10 x 50	69	132.5	0 5 14 51 19 00	0 5 14 51 19 86
3/4"	20 x 3	38	71.5	13.5	23.9	50.8	71	60	M 10 x 50	69	132.9	0 5 14 32 19 00	0 5 14 32 19 86
3/4"	20 x 3.5	38	71.5	13.5	23.9	50.8	71	60	M 10 x 50	69	133.2	0 5 14 33 19 00	0 5 14 33 19 86
3/4"	25 x 3	38	72	14	23.9	50.8	71	60	M 10 x 50	69	128.2	0 5 14 34 19 00	0 5 14 34 19 86
3/4"	25 x 4	38	72	14	23.9	50.8	71	60	M 10 x 50	69	128.9	0 5 14 35 19 00	0 5 14 35 19 86
1"	30 x 4	46	82.5	14.5	27.8	57.2	81	70	M 12 x 50	120	193.6	0 5 14 36 19 00	0 5 14 36 19 86
1"	30 x 5	46	82.5	14.5	27.8	57.2	81	70	M 12 x 50	120	195.8	0 5 14 37 19 00	0 5 14 37 19 86
1 1/4"	38 x 4	52	86	16	31.7	66.7	95	78	M 14 x 60	190	248.6	0 5 14 53 19 00	0 5 14 53 19 86
1 1/4"	38 x 5	52	86	16	31.7	66.7	95	78	M 14 x 60	190	248.9	0 5 14 38 19 00	0 5 14 38 19 86
1 1/4"	38 x 6	52	86	16	31.7	66.7	95	78	M 14 x 60	190	262.7	0 5 14 39 19 00	0 5 14 39 19 86
1 1/2"	50 x 5	63	110	17	36.5	79.4	113	95	M 16 x 75	295	442.6	0 5 14 54 19 00	0 5 14 54 19 86
1 1/2"	50 x 6	63	110	17	36.5	79.4	113	95	M 16 x 75	295	442.2	0 5 14 40 19 00	0 5 14 40 19 86
1 1/2"	50 x 8	63	110	17	36.5	79.4	113	95	M 16 x 75	295	444.7	0 5 14 41 19 00	0 5 14 41 19 86
1 1/2"	50 x 9	63	110	17	36.5	79.4	113	95	M 16 x 75	295	446.0	0 5 14 55 19 00	0 5 14 55 19 86
2"	65 x 8	75	127	19	44.5	96.8	133	114	M 20 x 110	580	699.0	0 5 14 42 19 00	0 5 14 42 19 86

When selecting the tube dimensions, refer to the pressure specifications of the tube manufacturer.

* Recommended tightening torques (Nm max.) at 10.9

** Sample product code, see: FG-1620-8/6

*** without screws