



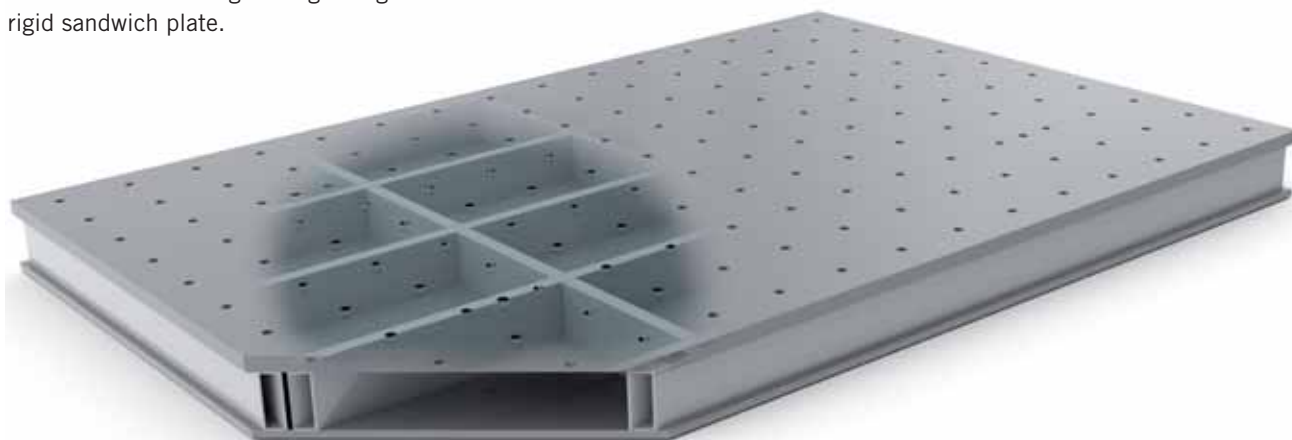
FixBase Alu Sandwich Plate

Type 2

Width	Length	Thick-ness	Thickness of sur-face plate w grid	Thickness of sur-face plate w/o grid	Grid	kg
800	1200	100	20	10	100	85
1000	2000	100	20	10	100	180
1200	1800	100	20	10	100	200
1600	2400	100	20	10	100	340

Above listed dimensions are examples, please state required dimensions and grid on your inquiry.

Top and bottom plates are connected with right angled profiles laid cross-wise inside and all round using a special adhesive resulting in a lightweight rigid sandwich plate.

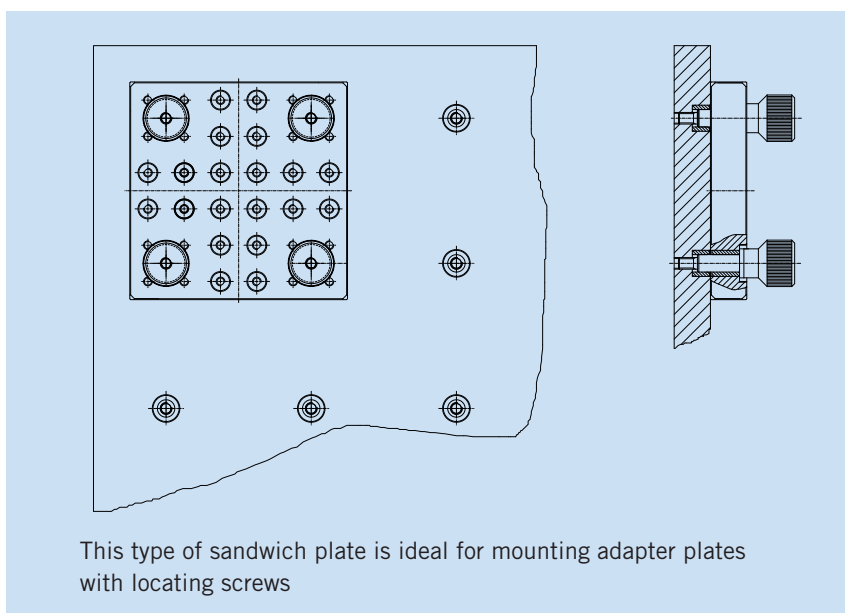


Evenness acc. to DIN 876 II Gen 3 (up to 5m x 2m, tolerances for larger dimensions on request)

Grid:

- with or without
- one or two sided
- with or without steel sleeves
- with or without threaded helicoil inserts
- PWS
- PPS

Grid tolerance JS7, total tolerance JS8
Available with higher accuracy on request



This type of sandwich plate is ideal for mounting adapter plates with locating screws

Max. Size of grid bores:
System Alufix 25, $\varnothing 12,5\text{mm}$ / M6